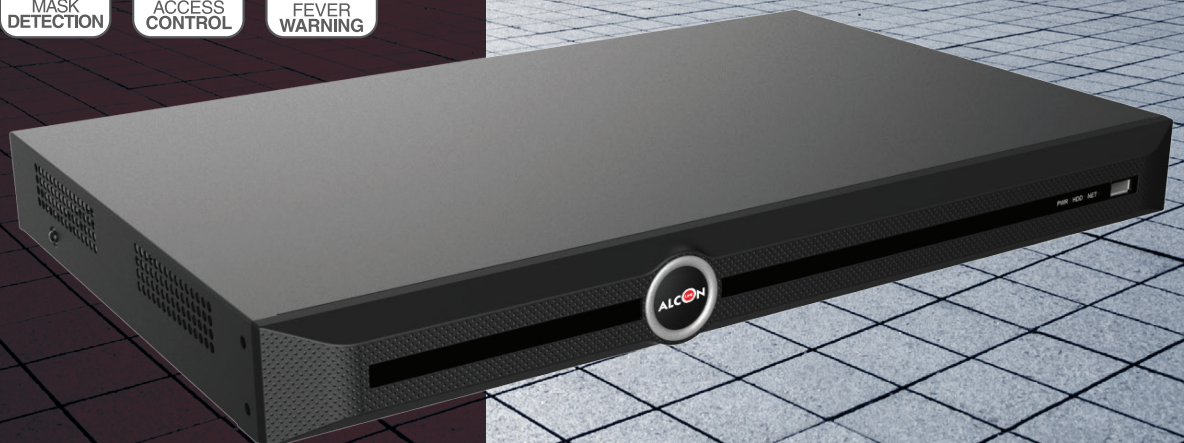


AL-NVR5010T-2DP

S+265 10CH 2SATA SMART THERMAL POE NVR

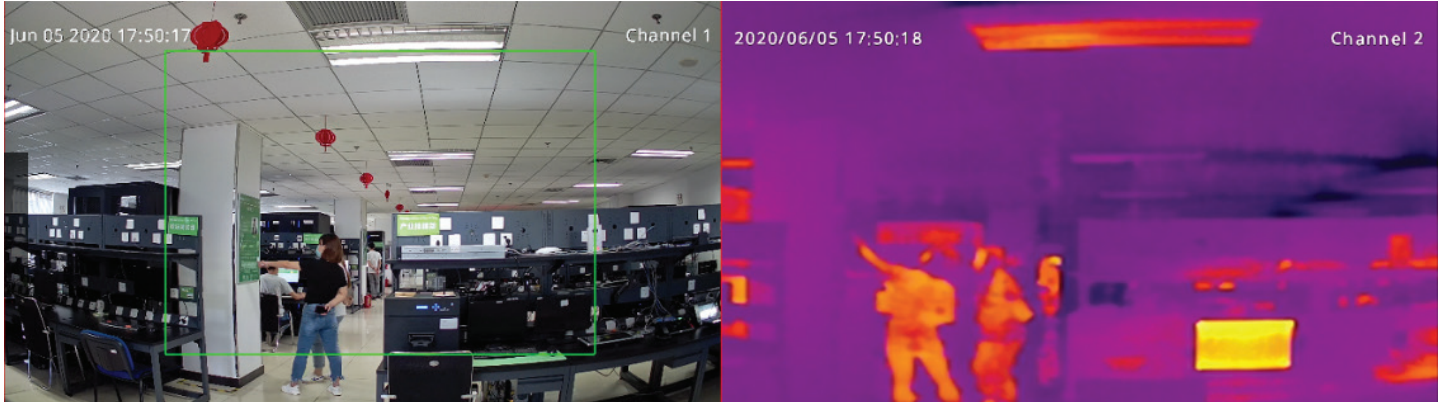
- S+265 Compression, Max Resolution 4K
- 8-ch POE interface, max. up to 30W for Each Port
- Plug & Play with up to 8 Independent POE Network Interfaces
- Up to 8MP Resolution Recording
- Support 10-ch Intelligent Analysis Process
- Smart Search&Recording
- Support ANR Function, Onvif(Profile S)
- Plug in free, Alarm I/O 0/1, Audio I/O 1/1, 2 USB
- 1x HDMI, 1x VGA, Same Video Source,
- 2 SATA(Up to 10TB Capacity for Each HDD)
- UI V3.0, Support free dragging of UI navigation bar



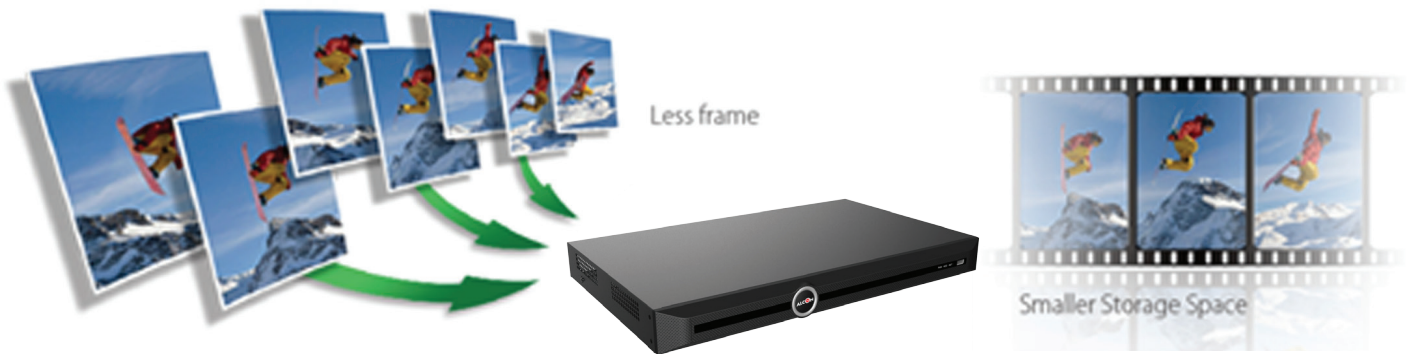
4K NETWORK VIDEO RECORDER

The Alcon AL-NVR5010T-2DP NVR is for the Smarter generation. Coming with built in Ethernet POE ports to provide direct power over Ethernet up to 08nos. IPCs, each POE ports can provide power up to 30wat. It is a Smart Enterprise NVR which supports up to 10ch 4K IP camera input and recording. It Supports Smart Recording, Smart Search and Smart Plug and Play. It Supports any 3rd party OEM IP camera with ONVIF compliance. The Alcon Premium Series NVR also supports intelligent video analytics like Face Detection, People Counting and many other features.

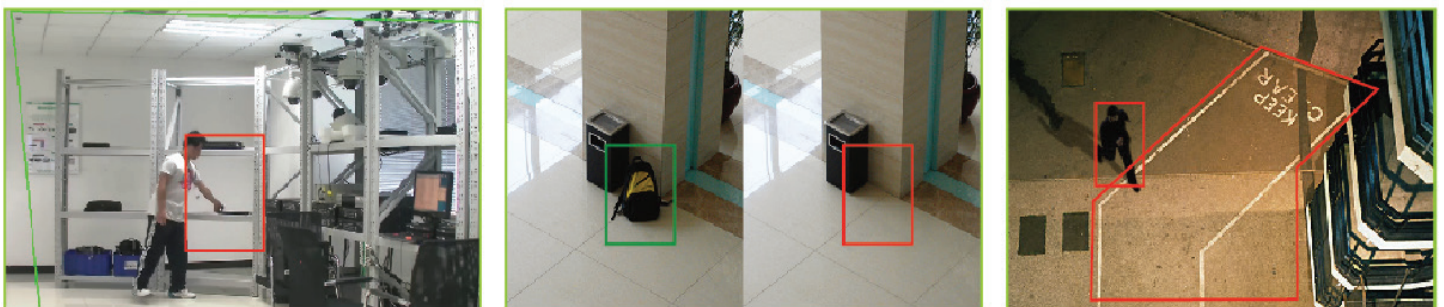
OPTICAL AND THERMAL BI-SPECTRUM IMAGE



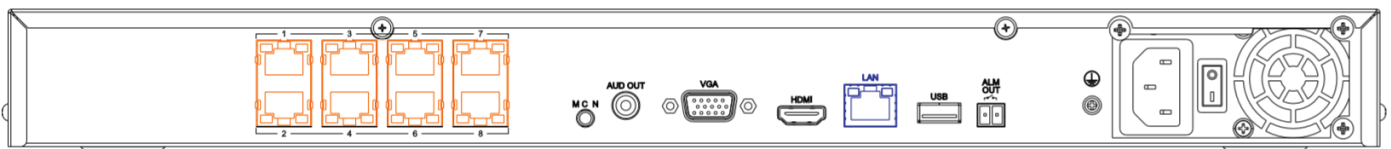
SMART RECORDING



SMART ANALYSIS

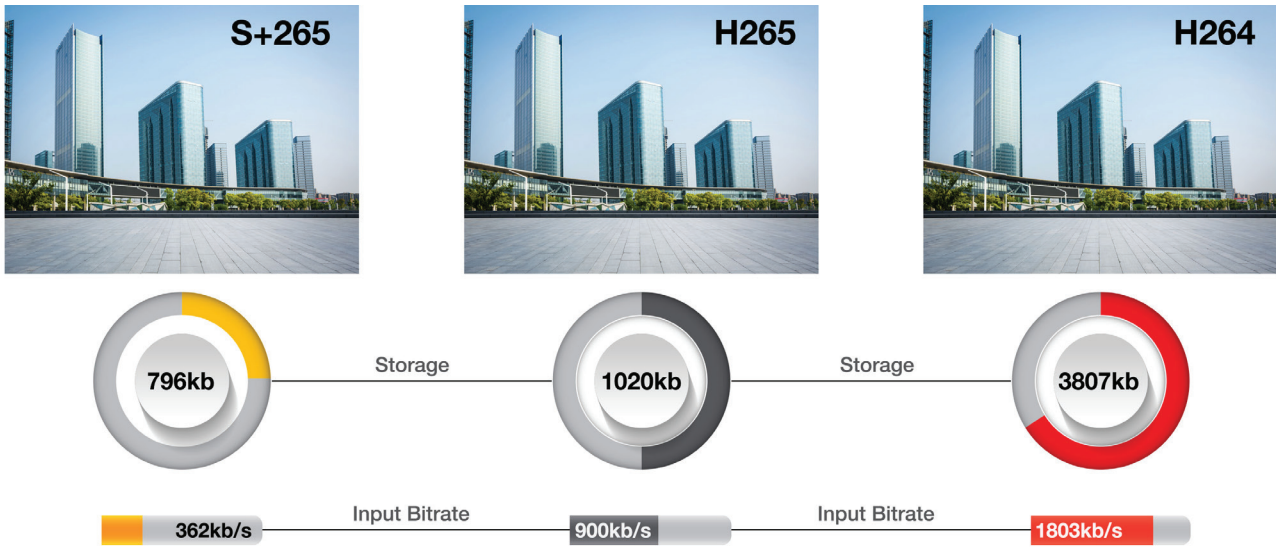


BUILT-IN POE PORTS

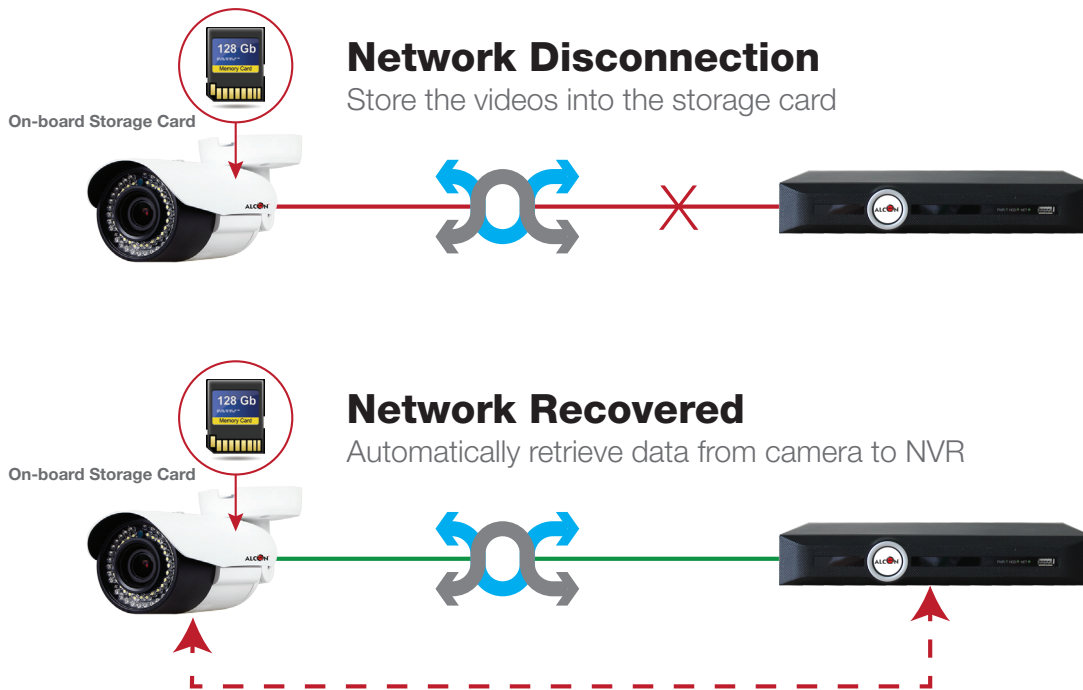


Coming with built in Ethernet POE ports to provide direct power over Ethernet up to 08nos. IPCs, each POE ports can provide power up to 30wat.

BANDWIDTH AND DISK SPACE



S+265 can save approximate 50% bitrate than H.265 technology, saves 70%-80% bandwidth compared with H.264



ANR FEATURES

NVRs (Network Video Recorders) with the ANR (Automatic Network Replenishment) function can automatically store video data on the IPC (Internet Protocol Camera) storage card when the network is disconnected. After recovery of the network, the NVR automatically retrieves the video data stored on the camera.

SPECIFICATION

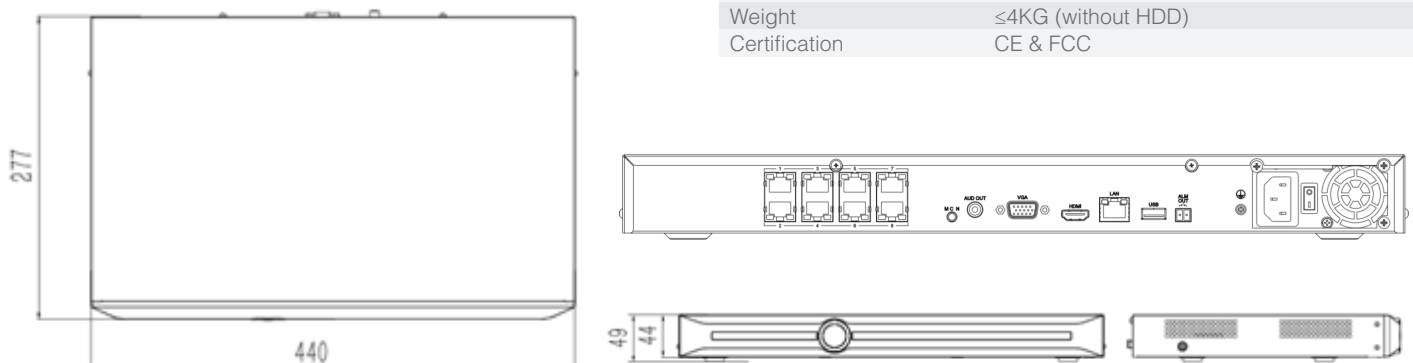
MODEL		AL-NVR5010T-2DP
VIDEO/AUDIO INPUT		
Video Input	10-ch	
Audio Input	1-ch, 3.5mm	
NETWORK		
Incoming Bandwidth	80Mbps	
Outgoing Bandwidth	80Mbps	
Mobile Software	P2P/IP for IOS&Android (App Name: Easylive)	
Internet Protocol	TCP/UDP/HTTP/MULTICAST/UPnP/DHCP/PPPoE/DDNS/FTP/NTP/RTSP/SMTP/SADP/SNMP ETC	
Email	Activated by Alarm	
ANR	Y	
Remote Connection	64	
Browser	Support all browsers, including IE, Safari, Chrome, Edge.(H.265 only supports configuration in non-IE kernel browsers)	
Advanced	Remaining Bandwidth Display	
VIDEO/AUDIO OUTPUT		
HDMI Output	1-ch, Resolution 3840X2160(30HZ) 2560X1440(30HZ) 2560X1600(60HZ) 1920x1080, 1280x720, 1440x900, 1366x768, 1280x800, 1024x768, 800x600	
VGA Output	1-ch, Resolution 1920x1080, 1280x720, 1440x900, 1366x768, 1280x800, 1024x768, 800x600 Adjustable Output mode, Self-adaptive Resolution	
Audio Output	1-ch, RCA (Linear, 1kΩ)	
Recording Resolution	8MP/6MP/5MP/4MP/3MP/1080P/UX-GA/720P/VGA/4CIF/DCIF/2CIF/CIF/QCIF	
Synchronous Playback	1-ch 4K/4-ch1080P/8-ch 720P/4CIF	
Display Split	1/3/4/6/8/9/10	
DECODING		
Compression	S+265/H.265/H.264H/H.264M/H.264B	
Preview Capability	1-ch 4K/4-ch1080P/8-ch 720P/4CIF	
E-Zoom	Y	
HARD DISK		
SATA	2 SATA for 2 HDDs	
eSATA	N/A	
Capacity	Up to 10TB Capacity for Each HDD(0~45°C)	
NTFS Files System	Y	
HDD Management	Group and Quota, Customized Recording Days	

EXTERNAL INTERFACE	
HDMI Output	1ch
VGA Output	1ch
POE	8 Independent 100 Mbps PoE Network Interfaces 120W, max to 30W for Each Port
Network Interface	1 RJ-45 10/100 Self-adaptive Ethernet Interfaces
Serial Interface	N/A
USB Interface	2 x USB2.0
Alarm In/Out	0/1

ADVANCE	
Video Analytics(VCA)	Camera VCA Function, including Tripwire/ Double Tripwire/Perimeter/Object Abandon/Object Lost/Loitering/Running/ Parking/Face Detection/Crowd/On duty Detection/Face Counting/People Counting/ Alert/Auto tracking/Video Abnormal Detection/Audio Abnormal Detection/ Video defocus diagnosis/Video scene transformation diagnosis
I-Frame Record	Y
Plug and Play	Y, Only for Alcon Premium Series Cameras
Image Flip	Y, Only for Alcon Premium Series Cameras
Corridor Mode	Y, Only for Alcon Premium Series Cameras
Smart Search	Quickly Search Target VCA Videos , Alcon Premium Series Cameras
Trigger Recording	Manual/Timing/Motion Detection/Port Alarm/ VCA Alarm/Video Lost/Video Mask
Smart Recording	Set Recording Bit Rate for Different Time
Alarm Recording	Pre Alarm Default 10s (5/10/15/60s Optional) , Post Alarm Default 10s (10/15/30/60/600s Optional) .
One Key Control	Intercom, Recording,one key add
Records Format	SDV, MP4
Records Encryption	Y
Records Tag	Y
Onvif	Onvif(Profile S)

General	
Language	English,Spanish,Korean,Italian, Turkish,Thai,Russian,Polish,French, Traditional Chinese,Simplified Chinese, Dutch, Hebrew (UI)
Power Supply	100 ~ 240V AC, 50 ~ 60 Hz
Consumption(without HDD)	≤ 25W(without HDD)
Working Temperature	-10 °C ~ +55 °C (+14 °F~ + 131 °F)
Working Humidity	10 % ~ 90 %
Chassis	1U
Dimensions	440mmx278mmx44mm
Weight	≤4KG (without HDD)
Certification	CE & FCC

DIMENSIONS



ORDERING INFORMATION

AL-NVR5010T-2DP

S+265 10CH 2SATA Smart Thermal POE NVR



*Product specifications and availability are subject to change without notice. Terms and Conditions Apply | CE | FCC | ONVIF | S | R | G