

AL-NVR5010-2D-FR

S+265 10CH 2 HDD FACE RECOGNITION NVR

- S+265/H.265/H.264 video formats
- Up to 10-channel input
- HDMI Video output at up to 6MP
- Incoming/Outgoing Bandwidth 80/80Mbps ports
- 1×RJ45 self-adaptive 10/100 Mbps
- 2×USB 2.0, Two-way Audio Input
- 10TBx 2 SATA interfaces for 2 HDDs
- 1:N people face recognition
- Web6 supports plug-in-free browsing
- VCA detection alarm is supported
- Support voice broadcast
- 32 Base Libraries, Face Pictures 10,000



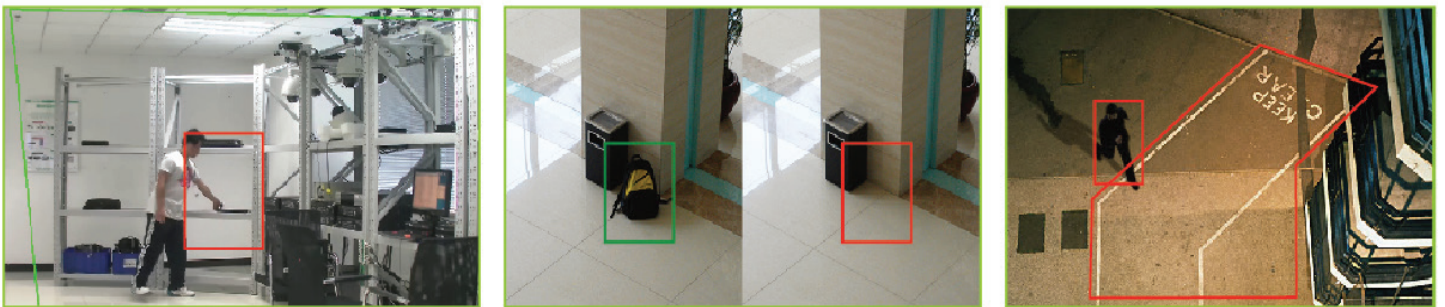
10CH 6MP FACE RECOGNITION NVR

The Alcon AL-NVR5010-2D-FR NVR is for the Smarter generation. It is a Smart Enterprise NVR which supports up to 10ch 4K IP camera input and recording. It Supports Smart Recording, Smart Search and Smart Plug and Play. It Supports any 3rd party OEM IP camera with ONVIF compliance. The Alcon Premium Series NVR also supports intelligent video analytics like Face Detection, People Counting and many other features.

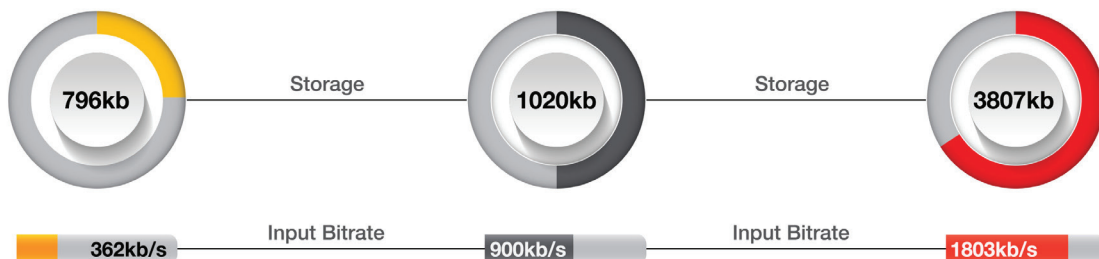
SMART RECORDING



SMART ANALYSIS



BANDWIDTH AND DISK SPACE



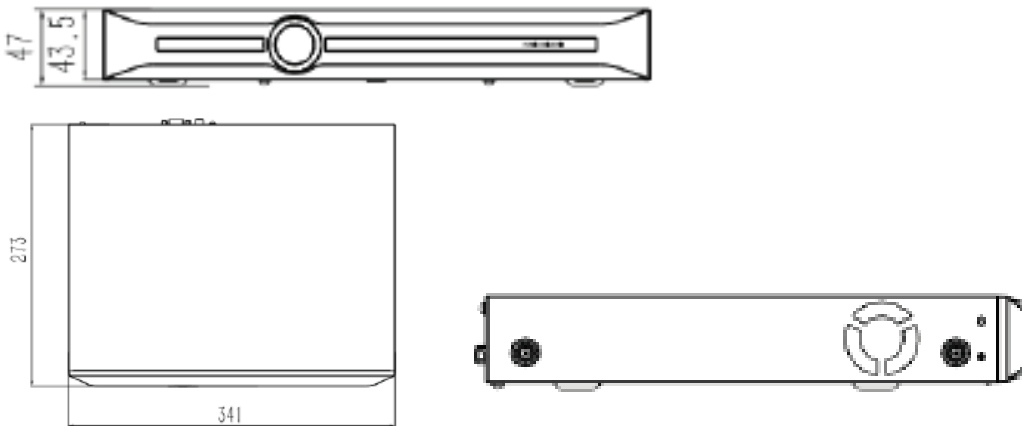
H.265+ can save approximate 50% bitrate than H.265 technology, saves 70%-80% bandwidth compared with H.264

SPECIFICATION

MODEL	AL-NVR5010-2D-FR
Video Input	10-ch
Max Resolution	6MP
Two-way Audio Input	1-ch, 3.5mm
Bandwidth	Income 80Mbps; Outgoing 80Mbps
OUTPUT	
HDMI/VGA Output	HDMI: 1-ch, 1920×1080, 1280×720, 800×600, 1024×768, 1366×768, 1440×900, 1280×800 VGA: 1-ch, 1920×1080, 1280×720, 800×600, 1024×768
Screen Split	1/3/4/6/8/9/10
Audio Output	1×RCA
DECODING	
Decoding Format	S+265/H.265/H.264
Recording Resolution	6MP/5MP/4MP/3MP/1080P/UXGA/720P/VGA/4CIF/DCIF/2CIF/CIF/QCIF
Preview Capability	1×5MP, 1×4MP, 3×1080P, 5×720P, 10×4CIF
Synchronous Playback	1×5MP, 1×4MP, 3×1080P, 5×720P
Records Encryption	Yes
HARD DISK	
SATA	2 SATA interfaces for 2 HDDs
Capacity	Up to 10TB for each HDD
eSATA Interface	N/A
Array Type	N/A
EXTERNAL INTERFACE	
Network Interface	1×RJ45 self-adaptive 10/100 Mbps network interface
USB Interface	2×USB 2.0
Serial Interface	N/A
Alarm In/Out	0/1

RELIABILITY	
N+M Hot Standby	N/A
ANR	N/A
FACE RECOGNITION	
Base Libraries	32
Face Pictures	10,000
Video Stream for Recognition	1
Picture Stream for Recognition	5
Face Picture Search	Yes
GENERAL	
video analytics	Tripwire, Perimeter, Double Tripwire, Object Abandon, Object Lost, Loitering, Running, Parking, Face Detection, Face Recognition, People Counting, Crowd, On Duty Detection, Video Abnormal, Audio Abnormal, Auto Tracking, Early warning(EW).
Web Version	Web6
Language	Simple Chinese, Traditional Chinese, English, Spanish, Korean, Italian, Turkish, Russian, Thai, French, Polish, Dutch, Hebraism (UI), Arabic (UI), Vietnamese (UI)
Operating Conditions	-10°C ~55°C, 10%~90% RH
Power Supply	DC12V 3.33A
Consumption (without HDD)	≤10W (without HDD)
Chassis	1U
Dimensions	45.1×255×231 mm (1.78×10.04×9.09 inch)
Weight (without HDD)	1.55Kg (3.42lb)

DIMENSIONS



ORDERING INFORMATION

AL-NVR5010-2D-FR

S+265 10ch 2 HDD Face Recognition NVR



*Product specifications and availability are subject to change without notice. Terms and Conditions